

STUDENTS WITHOUT MOTHERS, INC. ANNUAL REPORT

20
21



Empowering Students to
Help Themselves

MESSAGE FROM FOUNDER AND EXECUTIVE DIRECTOR

Mary Torrence Williams

Dear SWM Supporters,

Thank you for your continued support of Students Without Mothers. We are especially appreciative as we continue to work through the challenges we've all faced for the past two years as a result of the pandemic. While it has been difficult to fundraise without any of our key on-site events, we have managed to adjust to the new normal of a virtual world, at least for the time being.

Because the pandemic has lasted a lot longer than anyone expected, we now have a lot more students who are homeless or facing homelessness. Many of the students and their families were barely making ends meet prior to the pandemic and simply were unable to weather the storm for a two-year period. Because of our limited resources, we have placed a new focus on partnering with social workers and organizations who can provide the assistance our students need with regards to food, housing, clothing, medical and other resources. We also hope to be able to create a Program Director/Social Worker position in the future to consistently work with our students to address many of these problems before they become severe. This person will also serve as a liaison between the students and the various community resources available to them.

Our Life Coaching and Grief Counseling program continues to serve as a lifeline to many of our students. They are receiving information that is necessary for them to have a successful college career. Topics like "How to Select a College" and "How to Select a Major" allows many students to avoid wasting time recovering from poor decision-making or lack of advance planning. They are also learning valuable information on financial literacy and how to have a successful career after college. Most importantly, the Grief Counseling sessions provide our students with a safe place to talk about their feelings and learn how to cope with the grief associated with the devastating loss of a mother. They find peace and comfort in being in a room with others who understand and can relate to their journey.

We are able to provide the above support and services because of your generosity and the tireless work of our Board and Advisory Board. Our Board members continue to find ways during these unprecedented times to raise the funds needed to support the organization and the students we serve.

In 2021 we also welcomed back a prior Board Chair, Stacy Canady who served as an exemplary chair in leading our Board in the past. During her current term, Stacy has been focused on recruiting additional experienced board members and implementing ongoing training and development for all Board members.

We hope you will take a few minutes to review this report to meet our students and Board Members, to learn more about our programs and services, and to discover how you can help. This year we are also introducing you to our staff. Because of our limited resources, much of our staff work is handled by contractors and volunteers. This process allows us to stretch our limited resources to consistently provide support for an average of 40 students per year who are active in our program at both the high school and college levels.

We look forward to seeing you either in person or virtually at our events this year as we expect to implement a hybrid of an on-site and virtual model this year. This will allow us to adhere to expected crowd restrictions while also providing an option to engage supporters who are not located locally.

On behalf of our Board, Advisory Board and Staff, thank you for your support!

Sincerely,


MARY TORRENCE WILLIAMS
Founder and Executive Director

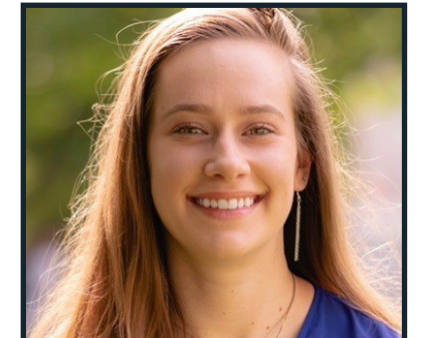
SWM STAFF



MARY TORRENCE WILLIAMS
Founder/Executive Director
Staff



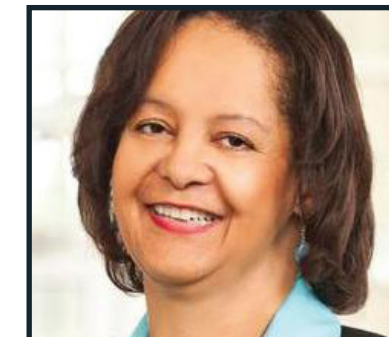
SYLVIA WARE
Program Coordinator
Staff



JULIA LEGA
Social Media Coordinator
Intern



STEPHANIE WATSON
Grant Writer/Consultant
Contractor



JOANN MCLEAN
Life Coach Director
Advisory Board Member
Volunteer



HOPE WILLIAMS
Licensed Professional Counselor
Board Member
Contractor



NATASHA ROBINSON
Certified Life Coach
Contractor

STUDENTS WITHOUT MOTHERS AT A GLANCE

OUR MISSION

Students Without Mothers is dedicated to helping high school students without mothers help themselves by empowering them to continue their education.

OUR STORY

Mary Torrence Williams, who founded the organization in 2004, knows all about the challenges of growing up without a mother. Mary lost her mother when she was just 14 years old. As Mary cleaned her high school principal's home to earn money for her class ring, she made a promise to herself: when she became successful, she would work hard to help other young people in similar situations.



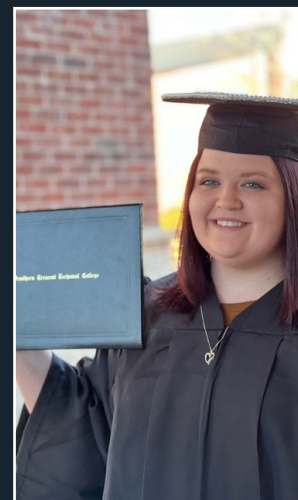
Mary was reminded of that promise when her own daughter made her aware of a student in a similar situation. This student, whose mother had also passed away, was cooking meals at home and selling them to other students to fund her college applications fees. Mary was inspired to do something about it -- and founded Students Without Mothers.

OUR VISION

SWM believes strongly in the principles of reaching out and of giving back. Our life affirming program is designed to be self-sustaining. Ultimately, we expect SWM graduates to keep the program going by providing peer counseling and other services. They will help others in the same way that they were helped, providing internships and financial contributions to help the next generation of Students Without Mothers.

Meet Marlee

“SWM has helped me in more ways than one. Meeting people who have had similar backgrounds as me who grew up without a mother always made me feel like I wasn’t alone! When I thought I couldn’t do it, I had so many people always reminding me that I was able to push through and get it done! Thank you to everyone at SWM for never giving up on anyone and always being here in all kinds of ways to help



2018 Scholarship Recipient

SCHOLARSHIP PROGRAM

Students Without Mothers is dedicated to helping high school students without mothers help themselves by empowering them to continue their education. The organization’s main purpose is to provide scholarships for college bound high school students who are without their mothers due to death or other unfortunate circumstances. Each student receives a \$4,000 scholarship (disbursed in annual payments of \$1,000). The organization has awarded four-year scholarships to 115 students since its inception in 2004. (Total is based on ten new students scheduled to begin the year-long life coaching program in May 2022 with scholarships to be awarded in June 2023).

The Scholarship Program focuses on students in the 21 County Metro Atlanta area who have lost their mothers due to death or other unfortunate circumstances. Applicants must plan to attend an institution of higher learning (either a two-year or four-year institution) and are required to complete an application and write an essay explaining the hardships associated with the loss of their mother. Priority is given to students from households where the guardian earns less than \$50,000 annually.

SCHOLARSHIP PROGRAM STATISTICS

Number of 4-year Scholarships Awarded:	115*
Number of Students Still Active or Successfully Completed:	76 (66%)
Number of Students No Longer Meeting Program Criteria:	39 (34%)

*Includes ten 2023 recipients who will begin life coaching in 2022.

LIFE COACHING AND COUNSELING PROGRAM

Upon acceptance into the scholarship program, students are required to go through the organization’s year-long life coaching program. During these Saturday sessions, the students receive training in topics like Life Skills, College Readiness, Career Readiness, and Social Etiquette. Other topics include Self-Defeating Behavior, Decision-Making, Conflict Resolution, How to Choose a College, How to Choose a Major, Obtaining Financial Aid, the College Admissions Process, Succeeding in College, Self-Discovery, Dressing for Success, Resume Writing, Technology Etiquette, and Financial Literacy. All life coaching sessions include a one-hour group grief counseling session with additional one-on-one counseling sessions available to students upon request.

The life coaching program is directed by SWM Advisory Board Member, JoAnn McLean, who has many years of experience in the development and implementation of programs specifically directed to help individuals who need help navigating life’s challenges. The organization’s head Life Coach, Natasha Robinson, worked with a youth-oriented organization previously where she was instrumental in developing programming content for inner-city youth. She specializes in developing and delivering content to help youth succeed in college and beyond. The sessions emphasize content and topics that level the playing field between students in our program and those from traditional households.

The grief counseling sessions are led by Hope Williams, Licensed Professional Counselor. These sessions are designed to help the students cope with the grief associated with their devastating loss. The group setting allows them to find a sense of belonging and normalization, a crucial part of the grief process. One-on-one counseling sessions are also available to the students upon request.

While the on-site services end when the students graduate high school and head off to college, virtual group sessions continue throughout their time in college with the availability of one-on-one sessions as requested.

OTHER SERVICES

In addition to the above programs, SWM’s scholarship recipients also receive laptop computers, dormitory supplies and gift cards. We also provide all scholarship recipients with access to other sources that might be able to assist with services such as medical needs, housing, health insurance, and grief counseling for their younger siblings.

GOALS FOR 2022

Continue to Expand the Life Coaching & Grief Counseling Program

Continue to expand the Life Coaching and Grief Counseling services which have proven so invaluable to program participants. Provide safe environments within which students may learn to cope with the devastating trauma of losing a mother at a young age. Provide the tools students may use to ensure their long term personal mental health and individual and career success. Continued expansion for 2022 will include polling college students to learn more about topics they would like to see added in hopes of increasing their attendance and participation.



2022 CALENDAR OF EVENTS

January 1 thru March 30	Annual Monthly Donor Drive
June 21	Annual Scholarship Reception
November 1 thru December 31	Annual Year End Pledge Campaign
November 29	Giving Tuesday

Other Potential Events - All are Tentative and Dates TBD

(Date TBD)	PGA Tournament Volunteer Event
(Date TBD)	Top Golf Multi-City Fundraiser
(Date TBD)	Chastain in Ellenwood

Note: All events are tentative and subject to change.

STUDENTS WITHOUT MOTHERS LOOKING FORWARD

Develop Partnerships with Other Organizations to Provide Additional Services to Scholarship Program Participants

Develop a strategy to identify organizations that provide services beneficial to our program participants. Organize meetings to determine how our students can connect with these organizations as well as how our program might be of help to organizations who also serve disadvantaged youth. These partnerships are essential in order to provide our program participants with social services that are not available directly from SWM due to our budget constraints.

Expand the SWM Board

Recruit additional experienced, committed Board members who are willing to fulfill the SWM Board Responsibilities. Board members will be recruited through the United Way VIP Board Training program and the efforts of current board and advisory board members.

2021 SCHOLARSHIP RECIPIENTS



JACOB BROWN
Brookwood High School
Mercer University



PATRICK DRUMMONDS
South Gwinnett High School
Georgia Southern University



KAMERON CHARLES EXPOSÉ
Stephenson High School
Fort Valley State University



KELLEY KING
East Coweta High School
Kennesaw State University



LISA LEWIS
Westlake High School
Georgia State University



MARILLYN OLVERA
Campbell High School
Kennesaw State University

Meet
Turquoise



"SWM gave me the support and mentorship I needed to figure out life and continue my education and career."

2004 Scholarship Recipient



BOARD OF DIRECTORS



MARY TORRENCE WILLIAMS
Founder/Executive Director
Executive Committee
Marketing Consultant



STACY CANADY
Board Chair, Luncheon Committee
Assistant Vice President for External and Legislative Affairs, AT&T



CASSANDRA BROWN
Board Member
Customer Success Account Manager, Microsoft



MARIA HOWELL
Advisory Board Member
Girls in Gowns Event Chair
Owner, MH Productions



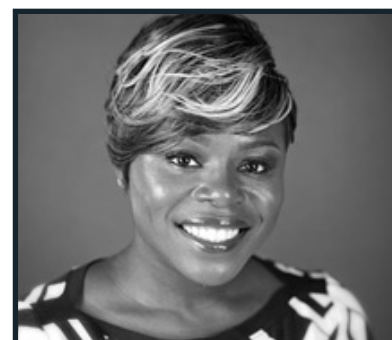
JOANN MCLEAN
Advisory Board Member
Career Planning & Life Coaching Program
Director/Scholarship Selection Committee
Director of Mission Development, Goodwill of North Georgia



PAULA SMITH
Advisory Board Member
Chastain in Ellenwood Event Chair
Paralegal Specialist (Retired)



STACY LACROIX
Board Member
Account Executive, WJXT/WCWJ-TV



GLORIA PINCKNEY
Board Member
CEO/Founder, The LEAP Group/I'm Loving Me Project

FOUNDING BOARD MEMBERS

MARY TORRENCE WILLIAMS
Marketing Consultant

RENEE ALSTON-MAISONET
Development Director, Greening Youth Foundation

OLIVIA BUCKMON
Consultant, Beacham and Company

ADRIENNE ANBINDER
Creative Director, Creative Consultants

ADRIENNE WADE HOLLIS (DECEASED)

DAVID HOLT
CEO, DaVido's \$3.75 Pizza



REGINALD PRIME
Board Member/Past Board Chair
Scholarship Selection Committee
Principal, Kaya Enterprises, LLC



HOPE WILLIAMS
Board Member
Licensed Professional Counselor
Founder/Executive Director, S.M.I.L.E. Project Support Services

ADVISORY BOARD

Meets Sharodon

"Besides helping me lower the cost of attending college, this scholarship shows me that there are people rooting for my success and reminds me that I will always have a support system."



2020 Scholarship Recipient

Donor Programs

SWM's Donor Programs are designed to provide consistent financial support for the organization throughout the year. Funds are used to provide the financial assistance and vital services our students need in order to continue their education. Those services include scholarship funds, life coaching, grief counseling and other resources. A portion of the Circle funds are specifically earmarked for the scholarship reserve fund.

The **Chairman's Circle Program** consists of making a minimum donation of \$5,000 per year. Chairman's Circle donations will cover a full, four-year scholarship (annual stipends of \$1,000 each) plus funding for the Student Emergency and Gift Card Program Fund.

The **Director's Circle Program** consists of those donors making a minimum donation of \$1,000 per year (one annual scholarship stipend).

The **Monthly Donor Program** consists of donors who commit to making a donation once per month for an amount determined by the donor.

Donors participating in these programs are listed on our website and in the annual report. Donors also receive special recognition with tickets or online access to specific fundraising events.

Please visit our website to learn more about joining one of these donor programs.

Join us in recognizing and congratulating current members of these donor programs:

CHAIRMAN'S CIRCLE DONORS

Georgia Wall & Don Gogel (New York, NY)

DIRECTOR'S CIRCLE DONORS

Kelvin & Pamela Buncum (Bentonville, AR)
John W, Jr. & Irma Daniels (Milwaukee, WI)
Carolyn Jernigan Glenn (Stone Mountain, GA)
Dr. Earl Glenn (Stone Mountain, GA)
Richard Willing and Jayne O'Donnell (McLean, VA)
Doug Smith (Lagrangeville, NY)
Beverly C. Daniel (Atlanta, GA)
Alan Yuspeh (Baltimore, MD)
Monice Hagler (Memphis, TN)



MONTHLY DONORS

Cassandra Brown
Natasha Byrd
Sharon Cooper
Mary Lee Davis
The Gardner Family
Allan Grant
Patricia Gregg
Delores Hall
Patricia Hayes-Spencer
Latoria Hunt
Inner Coach Counseling
Audrey Johnson
Stacey Johnson
Zikia T. Jones-Martin
Gerri Moore
Marilyn & Samuel Patterson
Felicia Penson
Reggie & Lynn Prime
Tamika Puckett
Marilyn Reaves
Valdor Ross
Niambi Beshea Sampson
Natalie Valdez
Sylvia Ware
Antonia Williams
Darryl & Mary Williams
James Williams
Stacy Canady
Dawn Gardner
Melissa Harper
Brenda Neal
Mylene Noir
Estelle Respert
Sharon Tyner
Valerie Vincola

Other Ways to Help

VOLUNTEER

We are currently seeking volunteers to assist in the following areas to help raise funds to provide scholarships and other resources to our students:

- **Silent Auction Committee:** Join a group of volunteers who work to obtain items and services for inclusion in silent auction and raffle fundraisers. Volunteers work closely with the Program Coordinator in selecting a category of vendors from a list that is provided.
- **PGA Tournament Concession Stand:** Volunteers are needed to work the concession stands at the PGA Golf Tournament in August at the Eastlake Golf Club. SWM receives a portion of the proceeds from concession sales for the event based on the number of volunteers participating.

AMAZONSMILE

As a part of our effort to remain safe we are all ordering online more than usual. This is a reminder to everyone that when ordering from Amazon please consider placing your order through AmazonSmile, noting that Students Without Mothers is your charity of choice. As a result, Amazon will donate a percentage of your sale to SWM. Learn more on our website!

DONATE DORMITORY & SCHOOL SUPPLIES

Many of the students in our program come from very low-income households with limited resources. As a result, it is a challenge for them to get many of the basic items needed for college. Please consider donating dormitory and school supplies for our students. Items can be purchased through our Amazon Wishlist and shipped directly to the office or you can purchase any of the items listed on our website and ship or deliver them to our office.

DONATE SILENT AUCTION & RAFFLE ITEMS

Please consider donating items to be used in SWM's silent auction and raffle fundraisers. Visit our website for more details on the type of items needed.

KROGER COMMUNITY REWARDS

This program makes fundraising easy by donating to local organizations based on the shopping you do every day. Once you link your Card to an organization, all you have to do is shop at Kroger and swipe your Shopper's Card. Find out how to link SWM to your Shopper's Card by visiting our website!

SPONSORS

FOUNDATIONS/GRANTS

Chick-fil-A, Inc. Corporate Social Responsibility
 Catholic Foundation of North Georgia
 Richard Munroe Foundation
 Tides Foundation
 Whole Foods Market Community Giving Program
 The UPS Foundation
 John and Mary Franklin Foundation
 Georgia Natural Gas
 JB & Lottie Harris Foundation
 Straughn-Turner Charitable Giving

INKIND SPONSORS/DONORS

Williams-Sonoma, Inc.
 Mary Kay
 Keller Williams (Tucker)
 Judith Ivey
 Marniesheia Perrymond
 K Humphreys
 Suzanne Touchstone
 Cheryl Hawkins
 Wanda Smith
 Alpha Pi Chi National Sorority, Inc.
 Valerie Vincola
 Sandra Sowers
 Cheryl Mcdowell
 Rachel Littman

MAJOR CORPORATE SPONSORS/DONORS

daVido's Pizza & Wings	UPS
Elizabeth Baptist Church	Ucensys
Ethel Edwards	Williams-Sonoma, Inc.
Jack and Jill of America	Women of AT&T
Stone Mountain Chapter	LCLC Holding Company LLC
JoAnn McLean	(David Holt & Stephanie Roberts)
Kares4Kids	Lisa Woodruff
Kroger	WXIA-TV (11 Alive)
Radio One Atlanta	

MONTHLY DONORS

Please see p.10 for a listing of the donors.

Please visit us at www.studentswithoutmothers.org for a complete listing of sponsors and donors.



"The organization really helped me in life and I am still so proud to have been selected to be a part of this family. Thank you so much. I am currently teaching English in China, and I really love it. Thank you for being a part of the beautiful change in my life."

2011 Scholarship Recipient

Meet Asantewaa



2020-2021
 Life Coaching & Grief Counseling
 Program Results

Students responded to several questions regarding self-discovery and social engagement:



<p>After each session, college students experienced a:</p> <ul style="list-style-type: none"> • 22% increase in time management knowledge after each session • 34% increase in knowledge of calming one's mind • 38% increase in knowledge on financial literacy 	<p>Students reported 10-50% improvement in:</p> <ul style="list-style-type: none"> • Decision-making • Self-discovery • Social engagement/etiquette • Choosing a major
--	---

What People Are Saying

"I like the interactions, student to student & student to coach. I also like to listen to others; it helps me understand things and view things from a different perspective." SWM Scholarship Recipient

ACCOUNTANT'S COMPILATION REPORT

STUDENTS WITHOUT MOTHERS, INC.
FINANCIAL STATEMENTS
ACCOUNTANTS' COMPILATION REPORT
FOR THE YEARS ENDED DECEMBER 31, 2021 AND 2020
Prepared by WBO CPA Group, Duluth, GA March 2022

DESCRIPTION OF ORGANIZATION AND NATURE OF ACTIVITIES

Students Without Mothers Inc. ("The Organization") is a Section 501(c)(3) a not-for profit corporation that was incorporated under the laws of Georgia on March 4, 2004 is dedicated to helping high school students without mothers help themselves by empowering them to continue their education. The organization's main purpose is to provide life coaching and scholarships to college bound high school students who are without their mothers due to death or other unfortunate circumstances.

SUMMARY OF SIGNIFICANT ACCOUNTING POLICIES

Basis of Accounting

The Organization prepares its financial statements using the accrual basis of accounting to present the results of activities and financial position in conformity with accounting principles generally accepted in the United States of America. To ensure observance of limitations and restrictions placed on the use of resources available to the Organization, the resources are classified for accounting and reporting purposes into categories established according to their nature and purpose. Net assets and revenues, expenses, gains and losses are classified based on the existence or absence of donor-imposed restrictions. Accordingly, the net assets of the organization and changes therein are classified as without restriction and with restrictions.

STATEMENTS OF FINANCIAL POSITION

Assets		2021	2020
CURRENT ASSETS			
Cash and cash equivalents	\$	239,479	\$ 215,369
PROPERTY AND EQUIPMENT			
Furniture and fixtures		7,853	7,853
Accumulated depreciation		(7,192)	(7,192)
Property and equipment, net		661	661
OTHER ASSETS			
Due from related party		2,750	2,750
Deposits		-	795
Total		2,750	3,545
TOTAL ASSETS	\$	242,890	\$ 219,575
Liabilities and Net Assets			
LIABILITIES			
	\$	-	\$ -
NET ASSETS			
Net assets without restrictions		242,890	219,575
Net assets with restrictions		-	-
Total		242,890	219,575
TOTAL LIABILITIES AND NET ASSETS	\$	242,890	\$ 219,575

STATEMENT OF ACTIVITIES

	2021	2020
REVENUE AND SUPPORT		
Contributions	\$ 143,448	\$ 164,171
Auctions and events	50,944	89,303
Donated goods and services	106,834	125,454
Total revenue and support	301,226	378,928
EXPENSES		
Program Services		
Scholarship program	18,000	22,000
Life coaching/board mentoring	119,271	124,171
Total program services	137,271	146,171
Fundraising event expenses	104,293	98,098
General and administrative	36,347	30,129
Total expenses	277,911	274,398
CHANGE IN NET ASSETS - Increase	23,315	104,530
Net assets at beginning of year	219,575	115,045
Net assets at end of year	242,890	219,575

STATEMENT OF CASH FLOWS

	2021	2020
CASH FLOWS FROM OPERATING ACTIVITIES		
Increase in net assets	\$ 23,315	\$ 104,530
Decrease in deposits	795	-
NET CASH PROVIDED BY OPERATING ACTIVITIES	24,110	104,530
NET CASH FLOWS USED BY OPERATING ACTIVITIES	24,110	104,530
CASH FLOWS FROM INVESTING ACTIVITIES		
	-	-
CASH FLOWS FROM FINANCING ACTIVITIES		
Due from related party	-	-
NET CASH FLOWS FROM FINANCING ACTIVITIES:	-	(2,700)
Net increase in cash and cash equivalents	24,110	104,530
Cash and cash equivalents, beginning of year	215,369	215,369
Cash and cash equivalents, end of year	\$ 239,479	\$ 319,899
SUPPLEMENTAL DISCLOSURES	-	-

Please visit www.studentswithoutmothers.org for a complete copy of the financial report.



20 21

STUDENTS WITHOUT MOTHERS, INC.

Address

200 Ottley Dr. NE Ste B
Atlanta, GA 30324

Phone

(404) 922-9011

Email

support@studentswithoutmothers.org

Website

www.studentswithoutmothers.org